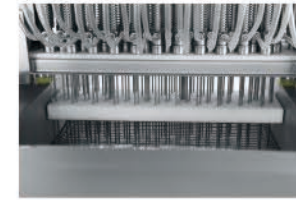
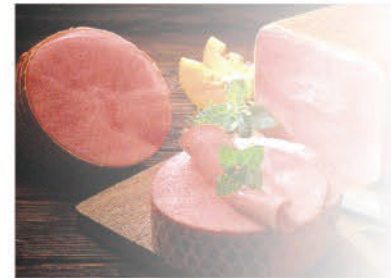


# ZS40/52/88/108/128

## ZS Saline Injector 注射机系列



- 采用欧洲技术。采用SUS304不锈钢材质。符合HACCP卫生标准。
- 可带骨注射(设有自动保护装置,当注射针碰到硬物时,注射针随之抬起,不受损坏;注射针可方便调节安装)。注射针设计独特、排列合理,料水可均匀分布在肉块中,注射率可调,一次注射可达100%。
- 输送带可方便地拉出清洗,符合人性化设计理念。
- 电器箱为分体安装,可有效地避免电器受潮。
- 设有四层料水过滤器,使料水循环过程不会堵塞盐水泵。循环系统设有稳压蓄能装置,保证注射压力稳定。
- 输送带设计合理,可满足对小肉块和大肉块的注射。
  
- European technology. The whole machine including the saline pump all adopt SUS304 stainless steel that is compliance with HACCP standard.
- May inject different kinds of meat with bones or without bones, injection pressure 0 - 10kg that range is adjustable. Injection needle arranges reasonably, saline water distributes in meat lump evenly, injection rate can reach 100%.
- Conveyor belt can be easily pull out, and easy to clean.
- Electric appliance installed separately, effectively avoid dampness damage.
- Saline water filtration circulation recycled after injection.
- Reasonable designed conveyor belt. Suitable for small and large meat.



■ ZS128

■ ZS88

■ ZS108II

型号 Type	生产能力 (t/h) Capacity	外形尺寸 (mm) External Dimension	电压 Voltage	总功率 (kw) Power	注射针数量 (支) Needles	注射针行程 (mm) Needle Moving Stroke	注射宽度 (mm) Injecting Width	注射次数双速 (time/min) Injecting speed	注射压力 (MPa) Injecting pressure	步进距离 (mm) Step distance	注射针规格 (mm) (任选) Needle Diameter	重量 (kg) Weight
ZS40	1.5	1250 × 950 × 1800	3相380V 50HZ	5.5	40	150	285	48/32	0.2-0.6	24	φ2 φ3 φ4	460
ZS52	1.5	2202 × 726 × 2260	3相380V 50HZ	5.5	52	200	352	32/60	0.2-0.6	30/50	φ4	580
ZS88	3	1700 × 1200 × 2030	3相380V 50HZ	8	88	200	565	48/32	0.3-0.8	24	φ2 φ3 φ4	730
ZSF88(油脂 grease)	3	1800 × 1900 × 2050	3相380V 50HZ	12	88	200	565	48/32	0.3-0.8	24	φ4	1054
ZS108II	3	2480 × 1395 × 2300	3相380V 50HZ	8.5	108	200	425	48/32	0.2-0.7	60	φ4	1400
ZS128	5	2600 × 1600 × 2700	3相380V 50HZ	14	128	200 最大300	495	20-50	0-0.8	26或52	φ2 φ3 φ4	1500

